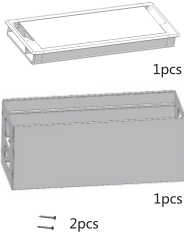


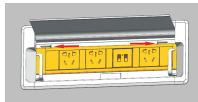
Installation



1 Open the hole on the table with R4 chamfer.



2 Put the under box into the hole, tighten the side screws.



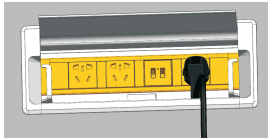
3 Put the cover onto the box, make wire connection at both ends of the under box.



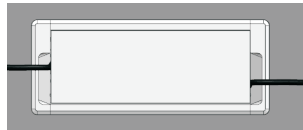
The picture of the under box



4 Plug the plug into the socket to get electricity, then it is ok to work.

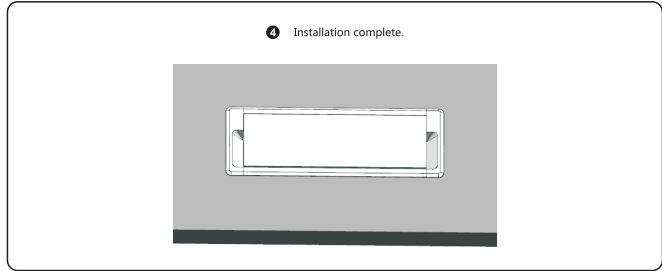
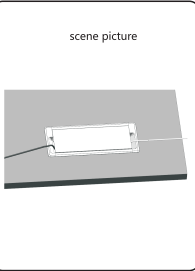
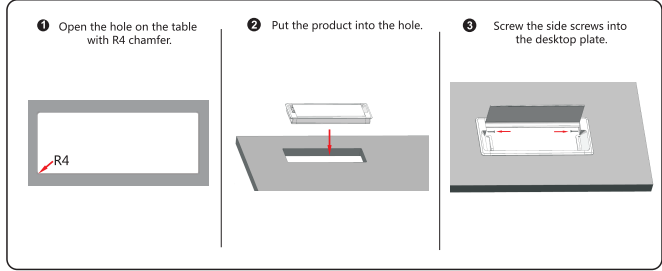
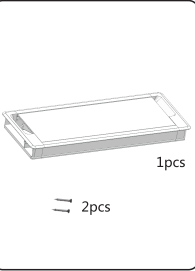


5 Installation complete.

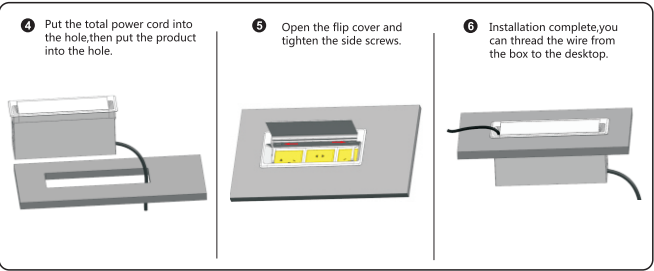
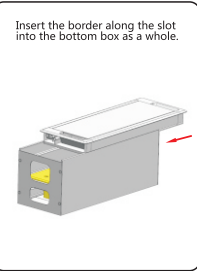
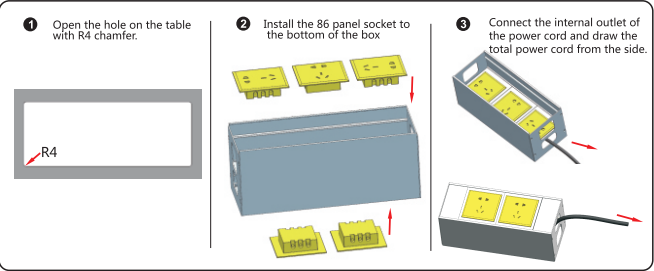
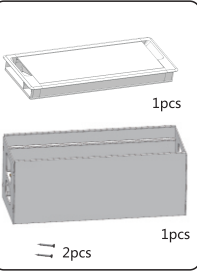


Damping Flip Cover / Box User Manual

Installation



Installation



Installation

