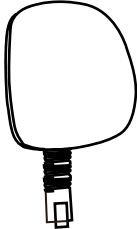

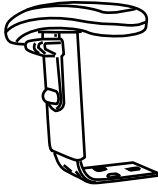



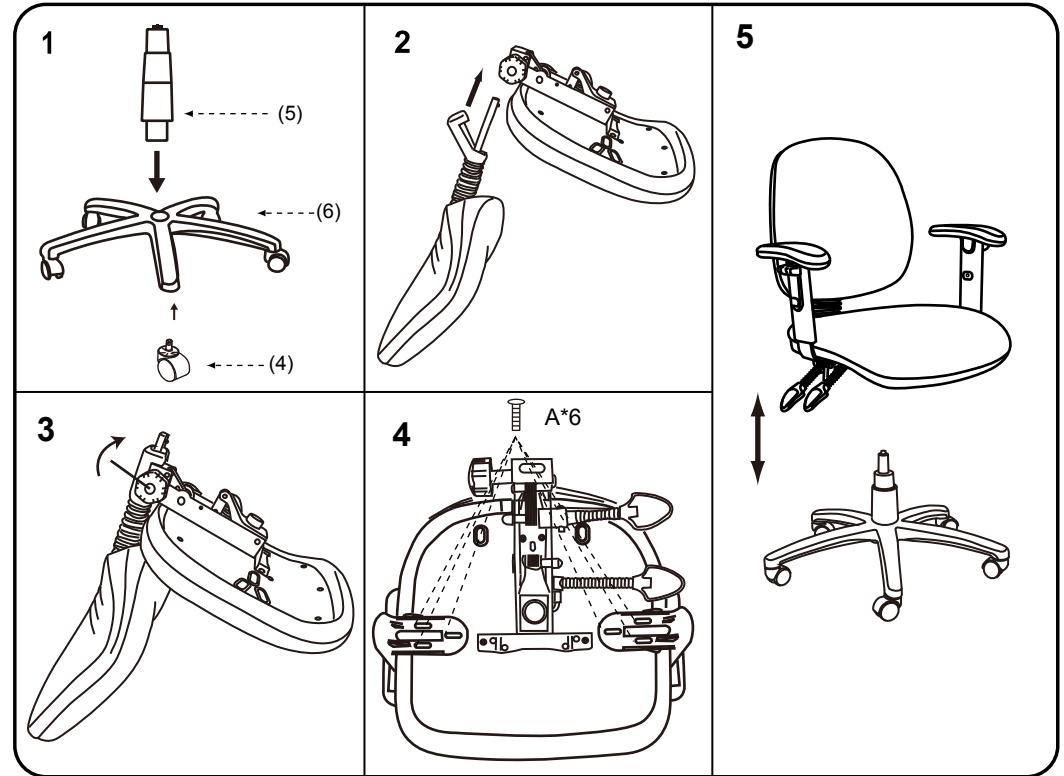


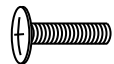
MODEL : YS07 YS08

(1)x1	(2)x1	(3)x1 (L)x1 (R)
		
Back Cushion	Seat Cushion & Mechanism	Right & Left Arm
(4)x 1	(5)x1	(6)x1
		
Caster	Gas Lift W/ Cover	Base



Insert and loosely tighten all screws. When assembly is completed, fully tighten all screws before using. This chair is only intended for sitting. Any other use will void the warranty.

(A)x6



M6 X 30 Arm Screws

