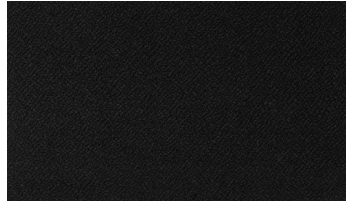




We are partners with the top textile companies in the industry to provide a broad range of design-oriented fabrics. We also stock a select range of fabrics that offer extraordinary value while meeting the demands of a commercial environment.

**Composition:** 100% Polypropylene **Use:** Heavy Commercial  
**Width:** 137cm  
**Martindale:** 45,000  
**Warranty of Fabric:** 12 Months  
**Indicative Price Category:** 1



**Black**  
CSCB



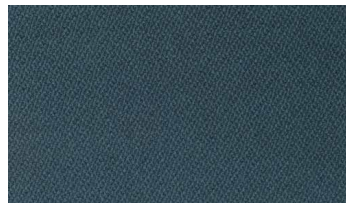
**Cobalt**  
CSCC



**Grey**  
CSCG



**Green**  
CSCGR



**Ink**  
CSCI



**Navy**  
CSCN



**Red**  
CSCR



**Wine**  
CSCW